



Heavy Glass Hardware

 **ALUMAX**  
BATH ENCLOSURES  
by Sapa



## Our Products

Alumax is the brand most chosen by the professional installer. Ease of installation, safety, leak prevention, and overall durability are just a few of the key features we engineer into each of our products.

Consumers appreciate the fact that all of our products are available in both standard and custom configurations, and that each features a wide selection of color options and glass patterns.

## Our Service

Alumax stands behind each product with a national network of service centers that stock, fabricate, and deliver on a regional basis. Our service centers are located in Los Angeles, Dallas, Kansas City, Philadelphia, Greensboro, and Atlanta.

Partner distributors in key markets offer the same high level of service to areas beyond our main service centers, ensuring fast and efficient delivery to virtually any location in the country.

Professional customer service representatives support both installers and consumers with anything from simple needs to the most challenging installation questions. Our people and our systems are totally dedicated to providing our customers with exceptional service.

## Our Mission

Everyone at Alumax is dedicated to supporting our customers' success by creating exceptional value through innovative products and service solutions. We measure our success by the success of our customers, communities, and people. ■





### Glass-to-Wall

Standard or Adjustable  
Beveled or Squared Edges



### Offset

Standard  
Beveled or Squared Edges



### Short Back

Standard  
Beveled Edges



### 180° Glass-to-Glass

Standard or Adjustable  
Beveled or Squared Edges



### 135° Glass-to-Glass

Standard or Adjustable  
Beveled or Squared Edges



### 90° Glass-to-Glass

Standard or Adjustable  
Beveled or Squared Edges



### Top/Bottom Pivot

Standard  
Beveled or Squared Edges



### Glass-to-Wall

Beveled Edges



### 180° Glass-to-Glass

Beveled Edges



### 90° Glass-to-Glass

Beveled Edges



### 135° Glass-to-Glass

Beveled Edges



### Notchless Wall-to-Glass

Beveled or Squared Edges

# Heavy Glass Hardware

## the industry standard

**ProLine** hinges are designed to meet all of your essential heavy glass needs. Choose from wall-to-glass or glass-to-glass in our basic selection of angles and finishes. Each hinge is available with squared or beveled edges.

### Specifications

- Accommodates Glass Thickness 3/8-1/2" (10-12mm)
- Max. Door Width (2 Hinges): 28"
- Glass-to-Wall Hinge size: 2.19" x 3.56"
- Solid Brass Construction

### Features

- Self-centering when within 25° of closed position
- Hinge swings 90° in and 90° out
- Available Finishes include Polished Chrome, Brushed Nickel and Oil Rubbed Bronze

*Refer to parts & accessories for clips, handles, pulls and additional channel options.*

	Rated Capacity	Maximum Door Weight	Maximum Door Width
3/8" Glass=4.75 lbs/sf	2 hinges	80 lbs	28"
1/2" Glass=6.40 lbs/sf	3 Hinges	120 lbs	32"

## clips

As an alternative to channels, clips can be mounted to the floor, wall or ceiling to secure the vertical glass panels of your bath enclosure. ■

### Specifications

- Accommodates Glass Thickness 3/8-1/2" (10-12mm)
- Forged Brass Construction

### Features

- Heavy, rigid design
- Manufactured from the finest alloys
- Alternative to shower channel
- Available in Silver, Brushed Nickel and Oil Rubbed Bronze



**Stock Heavy Glass Door Blanks**  
3/8" Clear With 2 Holes and 2 Hinge Notches

- 28" x 71-1/2"
- 28" x 75-1/2"
- 28" x 79-1/2"

Standard notch positions are 8" from top and bottom.  
Additional crating charges may apply.  
Full crate quantity pricing available. Contact your CSR.



**Stock Heavy Glass Door Blanks**  
3/8" Clear With 2 Holes and Top/Bot Notches

- 28" x 74-1/2"
- 28" x 76-1/2"
- 28" x 80-1/2"

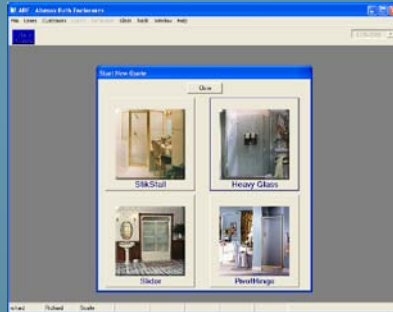
Additional crating charges may apply.  
Full crate quantity pricing available. Contact your CSR.

All Alumax door blanks now feature an updated notch for easier installation.



abe configuration software

The Almax Bath Enclosure ("ABE") configuration software makes ordering an Almax enclosure easy!



- Heavy Glass
- StikStall
- Sliders
- Pivot & Hinge

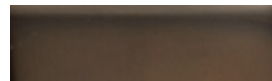
# Available Finishes



Polished Chrome



Brushed Nickel



Oil-Rubbed Bronze  
Powder Paint

# Towel Bars, Handles & Pull Knobs



**Pull Knob**  
Single Mount



**Pull Knob**  
Back-to-Back



**Handle & Towel Bar**  
8"x18" Push/Pull Combo



**Towel Bar**  
18" - 28" Acrylic  
Back-to-Back



**Handle**  
6" or 8" Tubular  
Back-to-Back



**Towel Bar**  
18"-28" Tubular  
Single Mount



**Handle**  
8" Acrylic  
Back-to-Back



**Handle**  
8" Tubular  
Single Mount

# Parts & Accessories



**SC-646**  
Euro Header and End Caps



**SC-644**  
Euro Curb and End Caps



**SC-505**  
Header and End Caps



**SC-505A**  
Curb



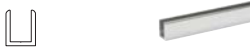
**SC-610**  
Curb Fill For SC-646 & SC-644



**SC-508**  
Wall Jamb



**SC-657**  
1/2" Wet Glazing Channel



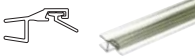
**SC-658**  
3/8" Wet Glazing Channel



**P500br**  
3/8" Bottom with wipe



**P990WS**  
3/8" Bottom with drip



**P180SDH**  
3/8" 180° Strike & Door Jamb



**P135SJ**  
3/8" 135° Strike Jamb - 98"



**SDTS**  
Vinyl Angle



**STDB**  
Vinyl Bulb



**V-226**  
Dry Glaze Vinyl - Black

Please refer to the Alumax Bath Enclosures catalog and price list for Parts & Accessories pricing and additional options.



**Greensboro Service Center**  
phone: 866.415.8192  
fax: 866.477.0618

**Atlanta Service Center**  
phone: 866.419.6688  
fax: 866.477.2740

**Philadelphia Service Center**  
phone: 888.396.5934  
fax: 866.769.0830

**Kansas City Service Center**  
phone: 888.748.5897  
fax: 866.457.8946

**Ontario Service Center**  
phone: 800.845.2284  
fax: 909.923.0745

**Dallas Service Center**  
phone: 800.282.2284  
fax: 214.638.0361

[www.alumaxbath.com](http://www.alumaxbath.com)

248 West Greene Street • PO Box 40 • Magnolia, AR 71753